



## Symptom Categories of Pest Damage

John Davidson  
University of Maryland

### 1. Chewed leaves or blossoms



**A. Defoliation**  
large caterpillars,  
sawflies, slugs,  
grasshoppers



**B. Shot holes**  
small caterpillars,  
leaf beetles



**C. Margins notched**  
black vine weevil,  
strawberryroot weevil



**D. Skeletonization**  
elm leaf beetle,  
Japanese beetle



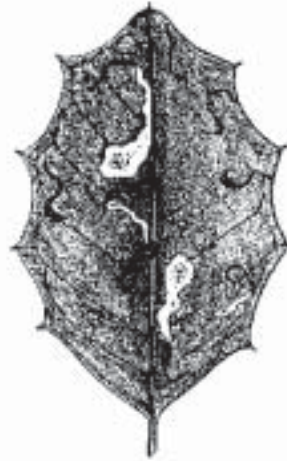
## 2. Discolored leaves or blossoms



**A. Stippling**  
spider mites,  
lace bugs,  
plant bugs,  
leafhoppers



**B. Streaking**  
thrips



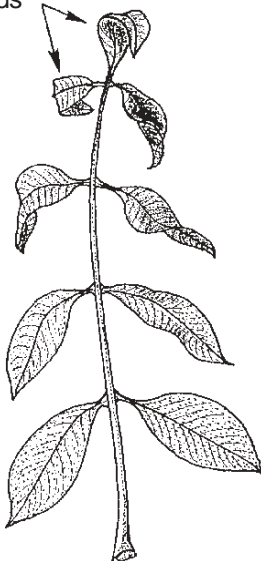
**C. Mining**  
boxwood leafminer,  
birch leafminer, locust  
leafminer and oak  
blotch leafminer (blotch  
mines); native holly  
leafminer (serpentine  
mine)



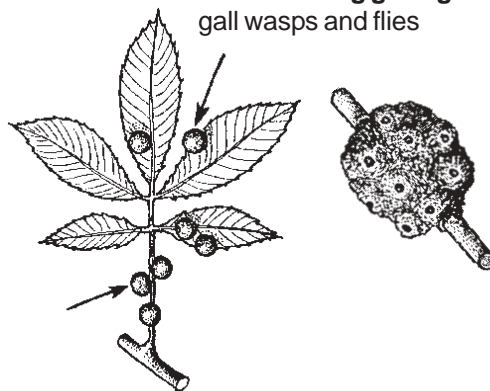
**D. Yellowing**  
aphids,  
mealybugs,  
whiteflies

## 3. Distorted leaves, branches, or trunks

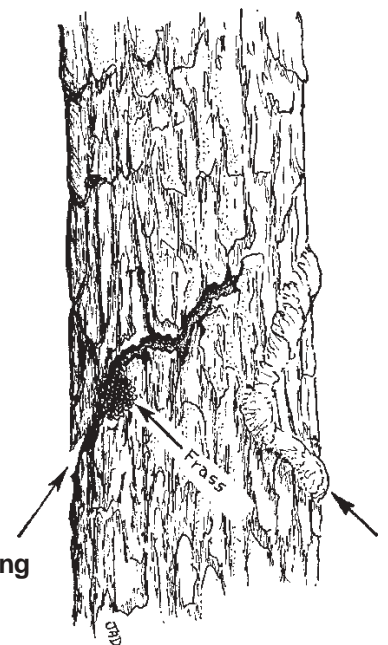
**A. Leaf cupping**  
boxwood psyllid,  
aphids



**B. Leaf or twig galling**  
gall wasps and flies

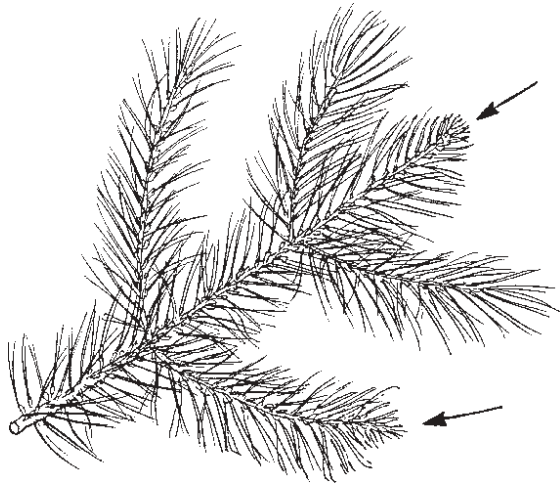


**C. Bark rippling or cracking**  
moth and beetle borers

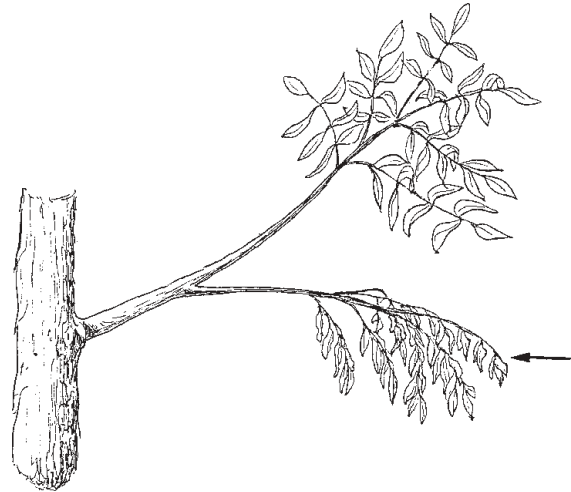




#### 4. Dieback of shoots, twigs, branches

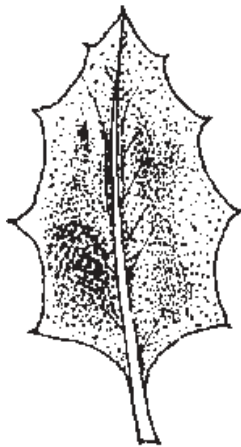


**A. Shoot dieback**  
pine tip moths

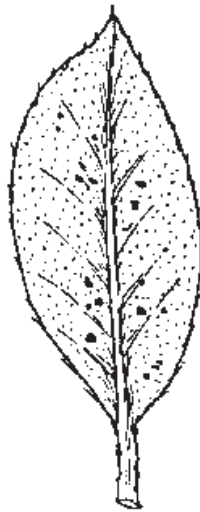


**B. Branch dieback**  
Wood-boring beetles and moths, twig girdler, twig pruner, root feeding beetle larvae, scale insects

#### 5. Products of insects



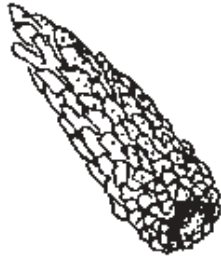
**A. Honeydew and sooty mold**  
aphids, soft scale insects, leafhoppers, treehoppers, planthoppers, whiteflies, psyllids, mealybugs



**B. Fecal spots**  
lace bugs, thrips, some plant bugs, leaf beetles



**C. Silk**  
tent caterpillars, webworms, leaf tiers



**D. Protective coverings**  
bagworms, case bearers



**E. Fluffy white wax**  
adelgids, mealybugs, some  
aphids, some scale insects, some  
planthoppers



**F. Soft or hard white, brown, gray to  
black wax covers**  
armored scale insects